



One Stop Provider For Your Healthcare Needs

RADIOLOGY | SURGERY | CARDIOLOGY | NEUROLOGY | UROLOGY | DENTAL
HEALTHCARE SOFTWARE | HOSPITAL FURNITURE | OT EQUIPMENTS | RADIATION PROTECTION

REFLECTION OF CUSTOMER'S TRUST IN BRAND ALLENGERS

95K+
Clients Served

100K+
Product Installations

110+
Countries Covered

**MULTI PRODUCT
BROCHURE**

 www.euronoxmedical.com

ABOUT US

Since three decades, Allengers has been serving the medical world with its wide range of high quality, state-of-art medical devices and software from its headquarters based at Chandigarh.

Thanks to the trust and confidence of our valued customers, Allengers has emerged as a fine, world class company and a major force to reckon with in the medical equipment field.

- We are best known in the industry for our excellent after sales services through a network of 43 sales and service centers in India and a wide overseas channel partners / service network.
- As per world renowned research organisation, Allengers enjoys the status of a Market Leader in India for Radiology and C-Arms with a market share of 33.8% and 50.1% respectively.
- The only Indian manufacturer of medical equipment having largest manufacturing set up in India, spread over an area of 1,00,000 sq. meters and further expanding.
- A global network of channel partners and service personnel in more than 100 countries worldwide in the continents of Europe, Asia, Africa, South America, Middle East, Commonwealth Independent States (CIS).



OUR MISSION

Converting our engineering excellence into medical equipments for making the world a better place to live in



OUR VISION

To provide high quality world-class medical equipments at affordable prices & maintaining the highest level of customer satisfaction



OUR MOTTO

Lightning response with a solution

Allengers has many firsts to its credit due to its strong in-house R&D

We are the first Indian company that has launched :

- An indigenous range of Cathlabs in 2004.
- Mobile digital radiography system in 2011.
- Battery powered mobile X-Ray machines.
- Largest range of high frequency X-Ray machines (2.5 KW to 80 KW).

Our sole mantra - Passion for Excellence

"Passion for Excellence" in everything we do is the sole mantra for our perpetual growth. In a country where health is still not within the reach of many, Allengers has been continuously striving hard to provide value for money world-class products and services. Our sole aim is to ensure superb quality, greater access and affordable treatment for all.



ASSURE PROTOCOLS

(Allengers Safety Standard for User from Radiation Emission)

All X-Ray based equipments involve some potential risk of radiation exposure. We, at Allengers understand your concerns. Allengers is fully committed towards radiation safety and care of its customers.

We have introduced ASSURE Protocols, which is a step in the direction of delivering best possible image quality at lowest possible dose. Allengers products with ASSURE Protocols are carefully crafted to protect users and patients from unwanted leakages in the X-Ray equipment.

ASSURE is 'Allengers Safety Standard for User from Radiation Emission' assuring peace of mind for the user. We at Allengers wish to ASSURE you that we are doing the best possible to protect you from unwanted exposures.

Therefore ASSURE Protocol signifies:

- Assurance of radiation safety in Allengers' products.
- Assurance of high quality imaging at lowest possible dose.
- Assurance of almost zero leakage radiation.
- Assurance of lowest scattered dose.
- Assurance of comprehensive radiation safety.

It is our constant endeavour to become a benchmark in Radiation Safety in India.

ASSURE version range mentioned is based upon lowest and highest configurations of safety standard protocols and is configuration dependant, which may vary for desired combinations.

Model : DIGIX FDX**Product : Fixed Digital Radiography System (Ceiling Suspended Autotrack)****Rating :** 65/80 KW (800/1000 mA)**Application :** All general purpose digital radiographic procedures / exposures on a patient standing, lying on a table or sitting on a chair.**Features :**

- Single / dual detector system.
- Fully motorized 3D ceiling suspended stand with auto tracking facility of tube for table and vertical bucky.
- High resolution detector.
- Dedicated image acquisition software workstation.
- Improved detail detective quantum efficiency.
- DICOM 3.0 compatible.

Models : MARS 50 - 80

Series : DIGIX-CSA ADV

Product : Fixed Digital Radiography System (Ceiling Suspended Autotrack)



ASSURE Ver. 9-17

Rating : 50/50+/65/80 KW (630 - 1000 mA)

Application : All general purpose digital radiographic procedures / exposures on a patient standing, lying on a table or sitting on a chair.

Features :

- Single / dual detector systems.
- Fully motorized 3D ceiling suspended stand with auto tracking facility of tube for table and vertical bucky.
- High resolution detector.
- *IntegraX* integrated system for exposure and image parameters control.
- Improved detail detective quantum efficiency.
- DICOM 3.0 compatible.

Models : MARS 15 - 80

Series : DIGIX ECO PLUS

Product : Digital Radiography System (Ceiling Free)

Rating : 15/30/40/50/50+ / 65/80 KW (250-1000 mA)

Application : All general purpose digital radiographic procedures / exposures on a patient standing, lying on a table or sitting on a chair (with manual maneuvering).



ASSURE Ver. 9-17

Features :

- *IntegraX* integrated system for exposure & image parameters control.
- Detector stand with integrated FPD to enable all types of radiographs with mobile table (MobiT / MobiT4 / MobiT6).
- Wi-Fi Detector Optional (14" x 17" / 17" x 17").
- Digital image enhancement & data storage.
- DICOM 3.0 compatible.

Models : MARS 15 - 80

Product : Digital Radiography System
(Ceiling Free)

Rating : 15/30/40/50/50+/65/80 KW
(250-1000 mA)

Application : All general purpose digital radiographic procedures / exposures on a patient standing, lying on a table or sitting on a chair.

Features :

- Single / dual detector system.
- Detector size 14" x 17" / 17" x 17" available.
- Fixed table (Floatex / Floatex+).
- *Integra X* integrated system for exposure & image parameters control.
- Vertical bucky stand.
- DICOM 3.0 compatible.



ASSURE Ver. 9-17

Models : MARS 15DR - MARS 40DR



ASSURE Ver. 10-13

Series : MOBILX DR

Product : Digital Radiography System
(Mobile)

Rating : 15/20/32/40 KW (250-500 mA)

Application : Battery powered instant imaging for trauma cases and bed side X-Rays.

Features :

- Motor assisted noise free movements.
 - 14" x 17" / 17" x 17" wireless FPD.
 - User friendly touch screen operating console.
 - Higher productivity.
- Separate power pack for X-Ray generators, motor drive mechanism.
 - *Integra X* integrated system for exposure and image parameters control.
 - Telescopic swivel tube arm with $\pm 270^\circ$ rotation.
 - Battery backup.
 - DICOM 3.0 compatible.

Models : MARS 6 / MARS 15DR**Series :** ROLLX DR**Product :** Digital Radiography System (Mobile)**Rating :** 6/15 KW (150/200 mA)**Application :** Instant imaging for trauma cases and bed side X-Rays.**Features :**

- 14" x 17" / 17" x 17" wireless FPD.
- User friendly touch screen operating console.
- *IntegraX* integrated system for exposure and image parameters control.
- Operates on just 15 Amps / 230 Volt (single phase) standard wall socket.
- Easy to transfer to customers electronically.
- DICOM 3.0 compatible.



ASSURE Ver. 8-13

Model : MARS 4.2

ASSURE Ver. 8-12

Series : LITEX DR / LITEX DR PP**Product :** Digital Radiography System (Mobile)**Rating :** 4.2 KW (110 mA)**Application :** Instant imaging for trauma cases and bed side X-Rays.**Features :**

- 110 KHz generator frequency.
- Tablet based image acquisition system.
- Detector can be used as Retrofit Kit.
- *IntegraX* integrated system for exposure and imaging parameters.
- Compact and light weight design.
- 14" x 17" / 17" x 17" portable wi-fi FPD.

- LITEX DR PP : Power pack is available for exposures without main power supply (optional).

Model : MARS 6R**Series :** LITEX DR / LITEX R DR**Product :** Digital Radiography System (Mobile)**Rating :** 6 KW (150 mA)**Application :** Instant imaging for trauma cases and bed side X-Rays.**Features :**

- 50 KHz generator frequency.
- Laptop based image acquisition system.
- Detector acquisition system can be used as Retrofit Kit and is compatible to use with any make X-Ray machine.
- *Integra X* integrated system for exposure and imaging parameters.
- Compact and Light weight design.
- 14" x 17" / 17" x 17" portable wi-fi FPD.
- **Litex R DR has swivel $\pm 90^\circ$ tube arm rotation.**



ASSURE Ver. 8-12

Model : MARS 2.5

ASSURE Ver. 5

Series : PORTX DR**Product :** Portable Digital X-Ray System**Application :** Ideal for bedside exams, emergency rooms, trauma units, intensive care facilities, road side trauma, nursing homes, etc.**Features :**

- Compatible with a Flat Panel Detector (FPD).
- Self diagnostics on panel.

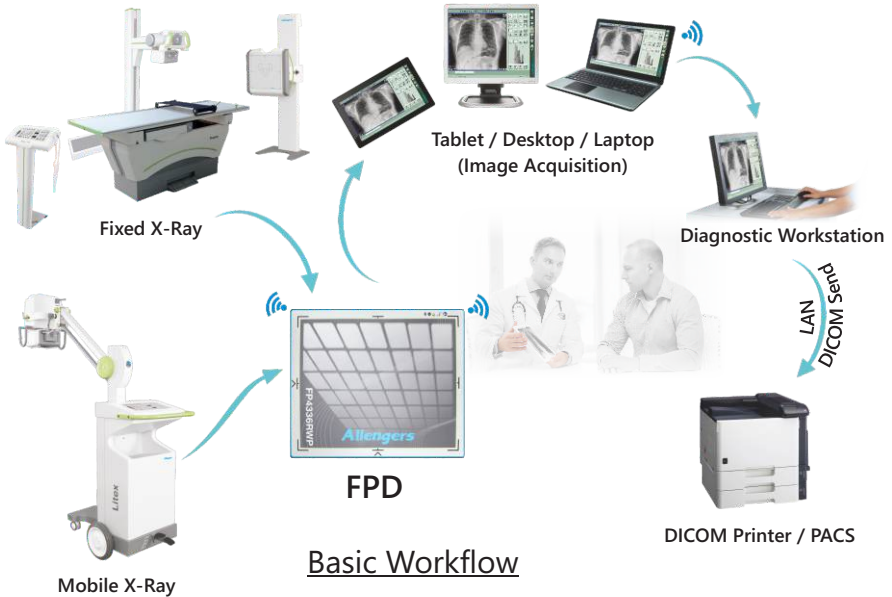
- Ideal choice for remote locations as it is portable hand held machine can be hand carried.
- Fully digital radiography X-Ray machine.
- Produces excellent images in less than 5 seconds.
- APR feature allows the user to select the exposure parameters as per patient's anatomy.

RETROFIT DR

Model : FLY DR

Product : Allengers latest new generation DR Retrofit Kit

Application : Retrofit solution for all mobile and fixed X-Ray units.



Features :

- 14" x 17" / 17" x 17" wireless FPD.
- Desktop based Image acquisition system for single room use.
- Acquisition laptop / tablet incase of multi-room application and diagnostic workstation.
- Auto Exposure Detection (AED) - no interface required.
- Fast and wireless image transfer to PACS.
- DICOM 3.0 compatible.

Components
of Fly DR

Models : MARS 65 / 80

Series : ANGIOTAB 9030 DRF

Product : Remote Controlled Digital Radiography and Fluoroscopy System

Rating : 65/80 KW (800/1000 mA)

Application : Remote controlled advance digital fluoro / radio procedures under special investigations.



ASSURE Ver. 14-21

Features :

- Motorized table tilt for ease of operation
- Digital spot.
- Dynamic FPD embedded inside table.
- Zero radiation to radiologist by providing complete remote controlled access.
- Head - to - toe coverage with remote and table side control.
- Digital work flow supporting HMS, PACS and Cloud Reporting
- Fully motorized movements.
- DSA package.
- Image stitching.
- Height adjustment of table (Optional).
- DAP meter.
- DICOM 3.0 connectivity.

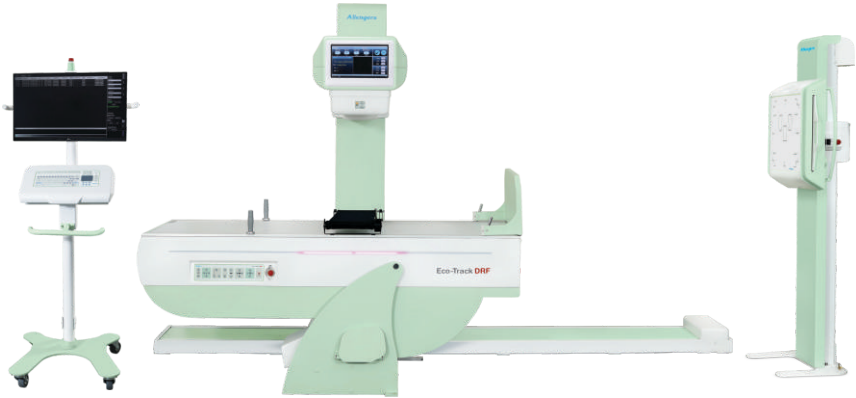
Models : MARS 50 / 50+ / 65 / 80

Series : ECO TRACK-DRF

Product : Remote Controlled Digital Radiography and Fluoroscopy System

Rating : 50/65/80 KW (630-1000 mA)

Application : Remote controlled advance digital fluoro / radio procedures under special investigations.



ASSURE Ver. 14-21

Features :

- Fully Digital, Fully Motorized auto tracking system for Digital Radiography and fluoroscopy examinations.
- High-resolution 3K x 3K Dynamic and Static Flat panel detector.
- Auto tracking of Tube with detector at Table Bucky in Horizontal & Vertical positions.
- Auto tracking of Tube with detector in Vertical Bucky Stand.
- Auto Positioning & tracking as per APR view.
- Auto Collimation.
- Pulsed Fluoroscopy, Digital Spot and Radiography Mode.
- Automatic Image stitching in Table & VBS.
- Dual Energy Exposure.
- Patient table with -12° to +90° of rotational movement (Auto stop at 0°).
- Non-Contact Anti-collision system for patient and system safety.
- 13.3" touch screen over tube head for image preview.
- Exposure and movement control from inside and outside of examination room.
- Automatic Exposure control feature available.
- Digital DAP for Patient Dose monitoring.
- DICOM 3.0 Compatible.
- Reporting Workstation.

HF X-RAY

Models : MARS 15 / 30

Product : Counter Balanced Mobile (CBM) X-Ray System

Rating : 15/30 KW (250/400 mA)

Application : General purpose radiographic procedures in wards with better out reach.

Features :

- Substantially lower exposure factors due to high frequency.
- Elimination of motion artifacts due to lower exposure time.
- Anatomical Programming
- Radiography (APR).
- Inbuilt capacitor bank for power storage.
- Inbuilt Power Pack for exposures without main supply - DUO PP series (optional).



ASSURE Ver. 7-11

Models : MARS 15 / 30



ASSURE Ver. 7-11

Product : Spring Balanced Mobile (SBM) X-Ray System

Rating : 15/30 KW (250/400 mA)

Application : General purpose radiographic procedures in wards with better out reach.

Features :

- Substantially lower exposure factors due to high frequency.
- Elimination of motion artifacts due to lower exposure time.
- Anatomical Programming Radiography (APR).
- Inbuilt capacitor bank for power storage.
- Inbuilt Power Pack for exposures without main supply - DUO PP series (optional).
- $\pm 90^\circ$ Rotational tube arm.

Model : MARS 6R

Product : Spring Balanced Mobile (SBM) X-Ray System

Rating : 6 KW (150 mA)

Application : General purpose radiographic procedures in wards with better out reach.

Features :

- Substantially lower exposure factors due to high frequency.
- Elimination of motion artifacts due to lower exposure time.
- Anatomical Programming Radiography (APR).
- 4 wheel design of tube stand with rotation.



ASSURE Ver. 11

Models : MARS 4.2 / 6



ASSURE Ver. 6-10

Series : LITEX

Product : Spring Balanced Mobile (SBM) X- Ray System

Rating : 4.2/6 KW (110-150 mA)

Application : General purpose radiographic procedures in wards with better out reach.

Features :

- Substantially lower exposure factors due to high frequency.
- Elimination of motion artifacts due to lower exposure time.
- Anatomical Programming Radiography (APR).
- Compact and light weight design.

HF X-RAY

Model : MARS 2.5

Series : PORTX

Product : Portable HF X-Ray Machine

Rating : 2.5 KW

Application : General purpose radiographic procedures at point of care.



ASSURE Ver. 5

Features :

- Truly portable analog X-Ray machine.
- High frequency generator for human and veterinary application.
- APR feature allows the user to select the exposure parameters as per the patient's anatomy.
- Soft touch keypad for parameters setting and alphanumeric display.
- Self diagnostics on panel.
- Can be positioned on a sturdy and user friendly mobile stand (as per user intended applications).
- The machine is compatible to be connected with Retrofit Kit (Fly DR) for digital X-Ray imaging.

Models : MARS 15 - 80

Product : Fixed X-Ray System (RAD)

Rating : 15/30/40/50/65/80 KW (250 - 1000 mA)

Application : Radiography.



ASSURE Ver. 7-13

Features :

- Ceiling Free Tube stand (CF-S).
- Compatible with various tables i.e. Horizon/Floatex XL/Floatex+/Flotaex+ XL as per user intended application
- Vertical Bucky Stand.
- Pre-programmed parameters
- Inbuilt micro controller.

HF X-RAY

Models : **MARS 15 - 80**

Product : Fixed X-Ray System (RAD)

Rating : 15/30/40/50/65/80 KW (250 - 1000 mA)

Application : Radiography.



ASSURE Ver. 7-13

Features :

- Option of Motorized Ceiling Suspended Tube Stand (with & without Autotracking is available)
- Compatible with various tables i.e. Floatex/Floatex XL/Floatex+ XL as per user intended application
- Vertical Bucky Stand.

Model : MAM - VENUS+

Series : FAIRY DR 3D / FAIRY DR 3D⁺

Product : Full Field Digital Mammography with 3D Tomosynthesis

Rating : 5 / 8 KW

Application : Diagnostic Mammography Procedures for Breast Cancer Detection.



ASSURE Ver. 18-19

Features :

- Fully motorized Isocentric mammography system.
- 24 cm x 30 cm FPD with high DQE, spatial resolution and dynamic range.
- Smart AEC: Advanced breast density detection algorithm to achieve accurate exposure parameters.
- Dedicated mammography 2D / 3D workstation.
- Faster detection without traditional distortion and shadowing.
- Improved image for large dense breast tissue.
- Increased comfort of 2D and 3D imaging in single sitting.
- Contrast-Enhanced Digital Mammography (CEDM) mode.
- Digital stereotactic biopsy (optional).
- Exclusive wide angle tomo mode with acquisition angle $\pm 27^\circ$ (optional)
- Workstation dual wall display.

DIGITAL MAMMO

Model : **MAM - VENUS+**

Series : FAIRY DR ADV / FAIRY DR⁺

Product : Full Field Digital Mammography

Rating : 5 / 8 KW

Application : Diagnostic Mammography Procedures for Breast Cancer Detection.



ASSURE Ver. 18-19

Features :

- Fully motorized Isocentric mammography system
- Auto release of compression after exposure.
- AEC with zero point exposure technique.
- *Integra X* integrated system for exposure and image parameters control.
- Automatic filter selection as per APR view.
- **Upgradable to 3D Tomosynthesis at site.**
- Digital stereotactic biopsy (optional)

Model : **MAM - VENUS+**

Series : VENUS DRV+

Product : Full Field Digital Mammography

Rating : 5 KW

Application : Diagnostic mammography procedures for breast cancer detection.



ASSURE Ver. 15-19

Features :

- Economical solution in digital mammography.
- Full field digital mammography with FPD.
- Auto release of breast compression after exposure.
- AEC with zero point exposure technique.
- *Integra X* integrated system for exposure and image parameters control.
- 3 MP medical display monitor.
- Additional reporting workstation (optional).

ANALOG MAMMO

Model : MAM - VENUS+

Series : VENUS+

Product : Mammography (Analog)

Rating : 5 KW

Application : Diagnostic mammography procedures in breast cancer detection.



ASSURE Ver. 9-11

Features :

- Digital display of compression parameters.
- Self diagnostic inter locks.
- Anatomical Programming Radiography (APR)
- Stereotactic biopsy compatible.
- Automatic Exposure Control (AEC)
Auto release of breast after exposure.

Model : MAM - VENUS+

Series : FAIRY

Product : Mammography (Analog)

Rating : 5 KW

Application : Fully motorized Isocentric mammography for breast cancer detection.



ASSURE Ver. 13-14

Features :

- Automatic Exposure Control (AEC).
- Anatomical Programming Radiography (APR).
- Auto release of breast after exposure.
- Stereotactic biopsy compatible.
- Pre-selectable compression force.

C-ARM

Model : HF 59R

Series : DIGISCAN V20 / V30

Product : C-Arm with Flat Panel Detector (FPD) Embedded with DSA

Rating : 15 KW

Application : General vascular DSA, peripheral DSA, pacemaker, gastro, ortho, spinal / neuro, urology procedures under fluoroscopy.



ASSURE Ver. 17-18

Features :

- Dynamic Flat Panel Detector (FPD) available in 21 cm x 21 cm and 30 cm x 30 cm size (as per user intended applications).
- Powered by Synergy FP-CR acquisition software.
- HMI - touch screen panel mounted on horizontal carriage.
- DSA package.
- Effective ABS System.
- Metal compensation.
- Dose display on monitor.
- Laser centering device.
- Preview collimation.
- Dynamic Noise Filter (DNF).

Model : HF 59R**Series :** DIGISCAN S20 / S30**Product :** C-Arm with Dynamic Flat Panel Detector (FPD)**Rating :** 6 KW**Application :** For ortho, gastro, spinal / neuro, urology, peripheral DSA and pacemaker procedures under fluoroscopy.

ASSURE Ver. 17-18

Features :

- Dynamic Flat Panel Detector (FPD) available in 21 cm x 21 cm and 30 cm x 30 cm size (as per user intended applications).
- Powered by Synergy FP-CR acquisition software.
- HMI - touch screen panel mounted on horizontal carriage.
- DSA package.
- Effective ABS System.
- Metal compensation.
- Dose display on monitor.
- Laser centering device.
- Preview collimation.
- Dynamic Noise Filter (DNF).

C-ARM

Model : HF 59 PLUS

Series : DIGISCAN COMPACT

Product : Compact High Frequency C-Arm with Flat Panel Detector (FPD)

Rating : 3.5 KW

Application : For multiple procedures like ortho, spinal / neuro, gastro, urology, etc. under fluoroscopy.



ASSURE Ver. 17

Features :

- Dynamic FPD available in 21 cm x 21 cm.
- Pulsed fluoro with variable FPS.
- Dose display on monitor.
- Laser centering device.
- Preview collimation.
- Ultra fast 'Digital' Automatic Brightness Stabilization (dABS).
- Selectable dose level.
- Digital spot.
- Dynamic Noise Filter (DNF).

Models : HF-49R**Series :** IMAGE PLUS LDHD**Product :** C-Arm Image Intensifier (9" I.I.)**Rating :** 6 KW**Application :** For extremities and advanced ortho, spinal, neuro, uro and gastro procedures under fluoroscopy.

ASSURE Ver. 9-12

Features :

- DigiMEM-LDHD memory having 32" monitor with split screen mounted on open sleek trolley / Synergy DIP memory with 2 nos. 17" monitors mounted on cabinet trolley.
- Preset image parameters setting as per extremities, ortho and uro procedures.
- Emergency exposure mode.
- Static beam collimator.

Optional :

- Laser centering device.
- IRIS / Parallel shutter with rotation collimator.
- Retractable cord with hand switch for fluoro exposures.
- Thermal printer.

Model : Allengers PRIDE HP

Series : PROXIMA CS

Product : Ceiling Suspended Fixed Cathlab with Flat Panel Detector

Rating : 100 KW

Application : Interventional cardiovascular procedures.



ASSURE Ver. 23

Features :

- Detector size 20 x 20 cm / 30 x 30 cm.
- 1K x 1K / 1.5K x 1.5K resolution & High DQE value.
- 55" high resolution, high luminous coloured monitor with multiple display options / medical grade monitor.
- Distortion free imaging.
- Motorized rotation and up / down movement of detector.
- 100 KW dual inverter based generator.
- Liquid metal tube for toughest clinical demands.
- Online Digital Subtraction Angiography.
- Stent view and Stent fade in fade out feature.
- Rotational Angiography available.
- More angles in LAO / RAO (-120° to +120°).
- Longer cathlab table for head to toe coverage.
- Integration / Interfacing of FFR / IVUS & OCT.
- QCA & QLVA.
- Parking Facility of Machine is available.

Model : Allengers PRIDE HP**Series :** ALTIMA ADV**Product :** Fixed Cathlab with FPD**Rating :** 100 KW**Application :** Interventional cardiovascular procedures.

ASSURE Ver. 21

Features :

- Detector size 20 x 20 cm / 30 x 30 cm.
- 1K x 1K / 1.5K x 1.5K resolution & High DQE value.
- Table side touch control panel with live image.
- 55" high resolution, high luminous coloured monitor with multiple display options / medical grade monitor.
- Distortion free imaging.
- Motorized rotation and up / down movement of detector.
- Online Digital Subtraction Angiography.
- Rotational Angiography available.
- Stent view and Stent fade in fade out feature.
- Longer cathlab table for head to toe coverage.
- Integration / Interfacing of FFR / IVUS & OCT.
- QCA & QLVA.

Model : Allengers PRIDE HP

Series : ALTIMA F100

Product : Fixed Cathlab with FPD

Rating : 100 KW

Application : Interventional cardiovascular procedures.



ASSURE Ver. 21

Features :

- Detector size 20 x 20 cm / 30 x 30 cm.
- 1K x 1K 1.5K x 1.5K resolution & high DQE value.
- 55" high resolution, high luminous coloured monitor with multiple display options.
- Distortion free imaging.
- Motorized rotation and up / down movement of detector.
- 100 KW dual inverter based generator.
- Liquid metal tube for toughest clinical demands.
- Online Digital Subtraction Angiography.
- ASSURE Protocols for radiation protection.
- Stent view.
- QCA & QLVA

Model : Allengers LIFE FP**Series :** PHOTON F80**Product :** Mobile Cathlab with FPD**Rating :** 80 KW**Application :** Interventional cardiovascular procedures.

ASSURE Ver. 19-20

Features :

- Detector size 20 x 20 cm / 30 x 30 cm.
- 1K x 1K / 1.5K x 1.5K resolution, high DQE value.
- 55" high resolution, high luminous coloured monitor with multiple display options / medical grade monitor.
- Distortion free imaging.
- Motorized rotation and up / down movement of detector available.
- Rotational Angiography available.
- Online Digital Subtraction Angiography.
- Stent view (standard) and Stent fade (optional) in fade out feature.
- More angles in LAO / RAO (-120° to +120°).
- Longer cathlab table for head to toe coverage.
- Integration / Interfacing of FFR / IVUS & OCT.
- **ALSO AVILABLE with Fixed Table.**

Product : HOSPITAL MANAGEMENT SYSTEM - CLARITY

For Hospitals | Clinics | Labs | Scan Centers

ON-SITE | CLOUD

MOBILE APP  | 



- Centralized management of clinical, administrative & financial aspects of a healthcare organization
- Stunning, User friendly & Intuitive design
- Optimized decision making via real time analytics
- Available on LAN & Cloud (On Premise / SaaS)

OUR HEALTHCARE APPLICATIONS CAN BE INTEGRATED TOGETHER TO FORM A DIGITAL ECOSYSTEM

PACS

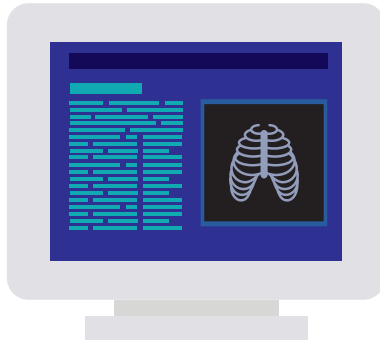
Product : PICTURE ARCHIVING & COMMUNICATION SYSTEM - Allen PACS

ON-SITE ONLY


MOBILE APP  | 

- Multi Modality Support (DICOM)
- Latest 2D & 3D tools for Image Viewing & Processing
- Studies shareable with external physicians (Tele Radiology)
- Detailed Reporting Module (All reporting stages)
- Optimum Image Quality & Speed
- MIS Statistics for Top Management
- Viewable on all PCs / Workstations / Tablets (All OS) (LAN & Internet)
- Multi Site Integration



Product : RADIOLOGY INFORMATION SYSTEM (RIS)ON-SITE | CLOUD MOBILE APP  

- Complete management of a radiology setup
- Automated patient data entry in modality worklist (MWL)
- Complete integration with PACS
- Patient billing, reports & statistics

Product : LABORATORY INFORMATION SYSTEM (LIS)ON-SITE | CLOUD MOBILE APP  

- Complete management of pathology setup
- Automated data entry & retrieval from lab analyzers (LISCOM)
- Auto notifications of test results to clients via SMS
- Patient billing, reports & statistics



COAT APRONS



SKIRTS & VESTS



**DOUBLE SIDED
APRONS**



PATIENT APRONS
Lower Body Protection



We are
Transforming
Lives at

Allengers
CARE FOUNDATION

Allengers Care Foundation, is an organization (NGO) created under the Allengers umbrella for actualizing the CSR objectives of the organization by way of regular contribution and welfare of the underprivileged sections of the society.



“ The best way
to find yourself
is to lose yourself
in the service of
others ”
Mahatma Gandhi





AWARDS & RECOGNITIONS



- Recipient of **“The First BIS Licence In The Country”** awarded on 14 October 2022 on the occasion of World Standards Day 2022, which is about sharing a vision for a better world.

- Recipient of **“Most Promising Company In Radiology & Imaging Devices Award”** for the year 2021 & 2022 (2 consecutive times) by MT India Healthcare.



- Recipient of **“Leadership Award 2016”** from ASSOCHAM.

- The only Indian medical equipment mfg. company bestowed with **“National Award - Quality Products”** from The Prime Minister of India on 1st March 2014.



Allengers with its focus on quality and customer support has been recipient of many awards.



- Recipient of **"Distinguished Entrepreneurship Award 2013"** from PHD CCI.



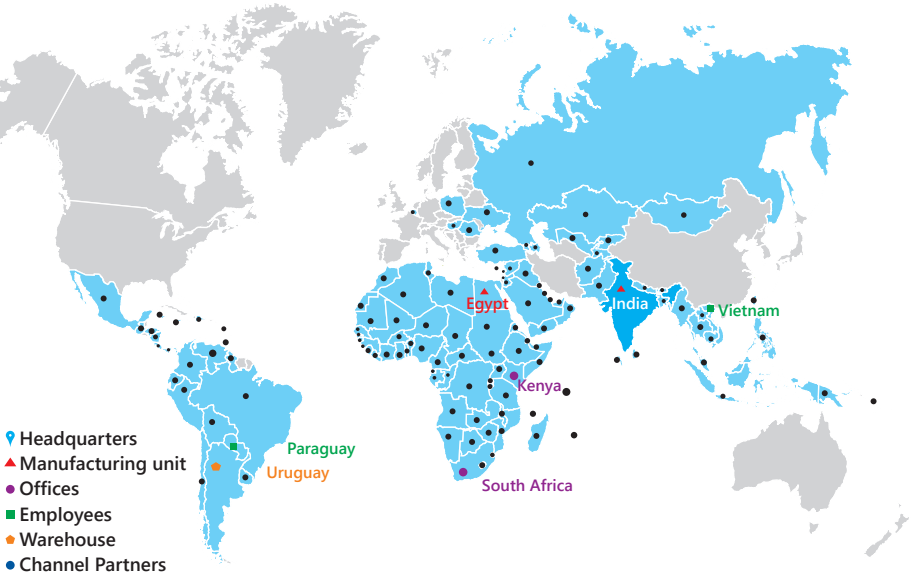
- The only Indian medical equipment mfg. company bestowed with **"National Award - Outstanding Entrepreneurship"** from The President of India in 2011.

- Recipient of **"EEPC Award - Export Excellence"** from 2010 (9 consecutive times).



- Recognized as **"Star Export House"** by Ministry of Commerce and Industry, Government of India.

ALLENGERS PRESENCE WORLDWIDE



QUALITY, SYSTEM AND SAFETY CERTIFICATIONS



DISTRIBUTED BY



FOR ANY ENQUIRIES CONTACT US

+44 20 3642 1175

info@euronoxmedical.com

www.euronoxmedical.com

35 Berkeley Square, Mayfair, London, W1J 5BF