

UNLOCKING ABUNDANT POSSIBILITIES

INTRODUCING REMOTE CONTROLLED
**DIGITAL RADIOGRAPHY
& FLUOROSCOPY
SYSTEM**

Serving
Healthcare
since
1987



Quality, System and Safety Certifications



Eco Track-DRF
MARS 50 / 50+ / 65 / 80

About Allengers

Allengers is a leading global provider of innovative and reliable medical imaging solutions. With a rich legacy of over three decades, Allengers is renowned for its cutting-edge technology, exceptional quality, and commitment to customer satisfaction. We offer a wide range of advanced digital radiology and cardiology products, including X-Ray Machines, C-Arms, Mammography Systems, Remote-Controlled DRF Tables and Cath labs.

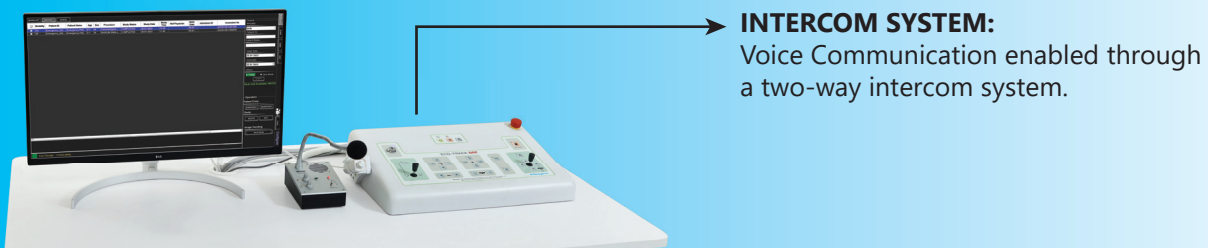
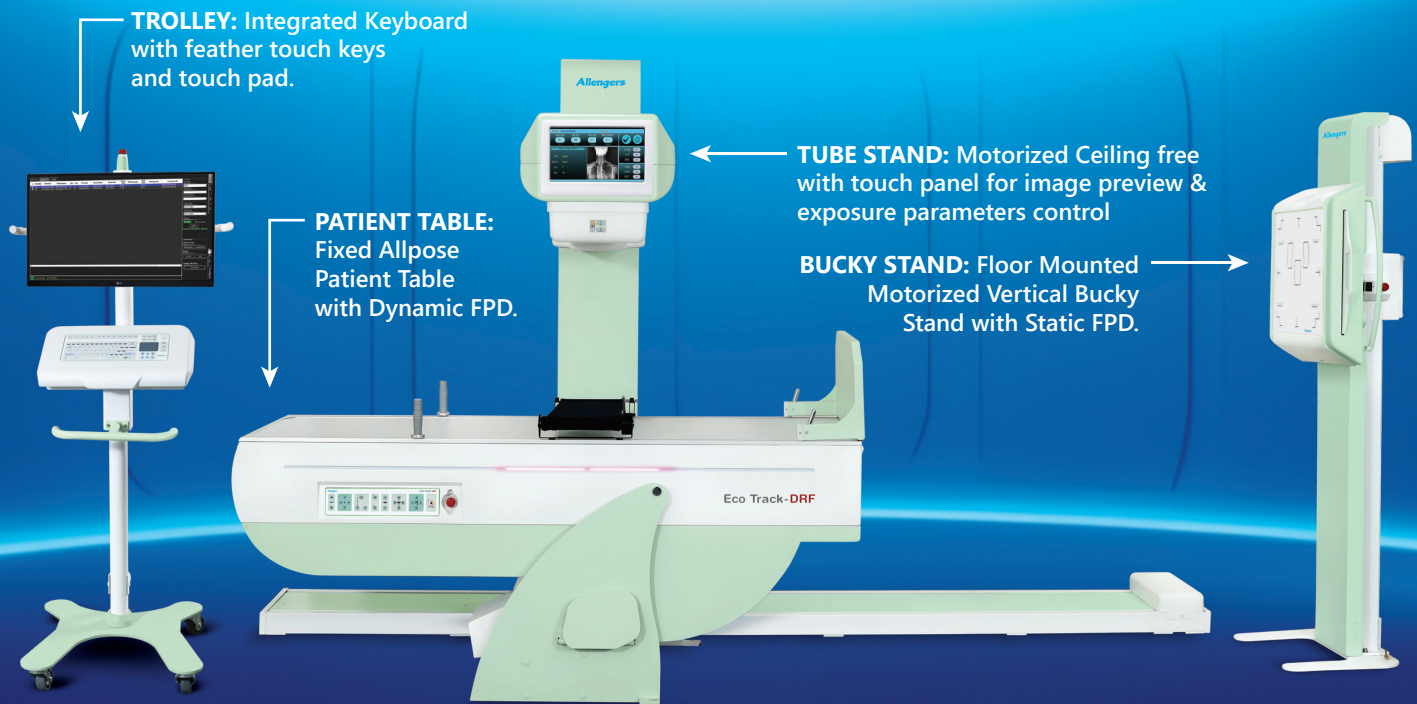
Our state-of-the-art products are designed to deliver accurate diagnoses, enhance patient care, and improve clinical outcomes. Trusted by healthcare professionals worldwide, we are dedicated to revolutionizing the field of medical imaging through continuous innovation and excellence.

Choose Allengers as your dedicated healthcare partner to embark on a journey of healthcare revolution, guided by cutting-edge technology and an unwavering commitment to excellence.

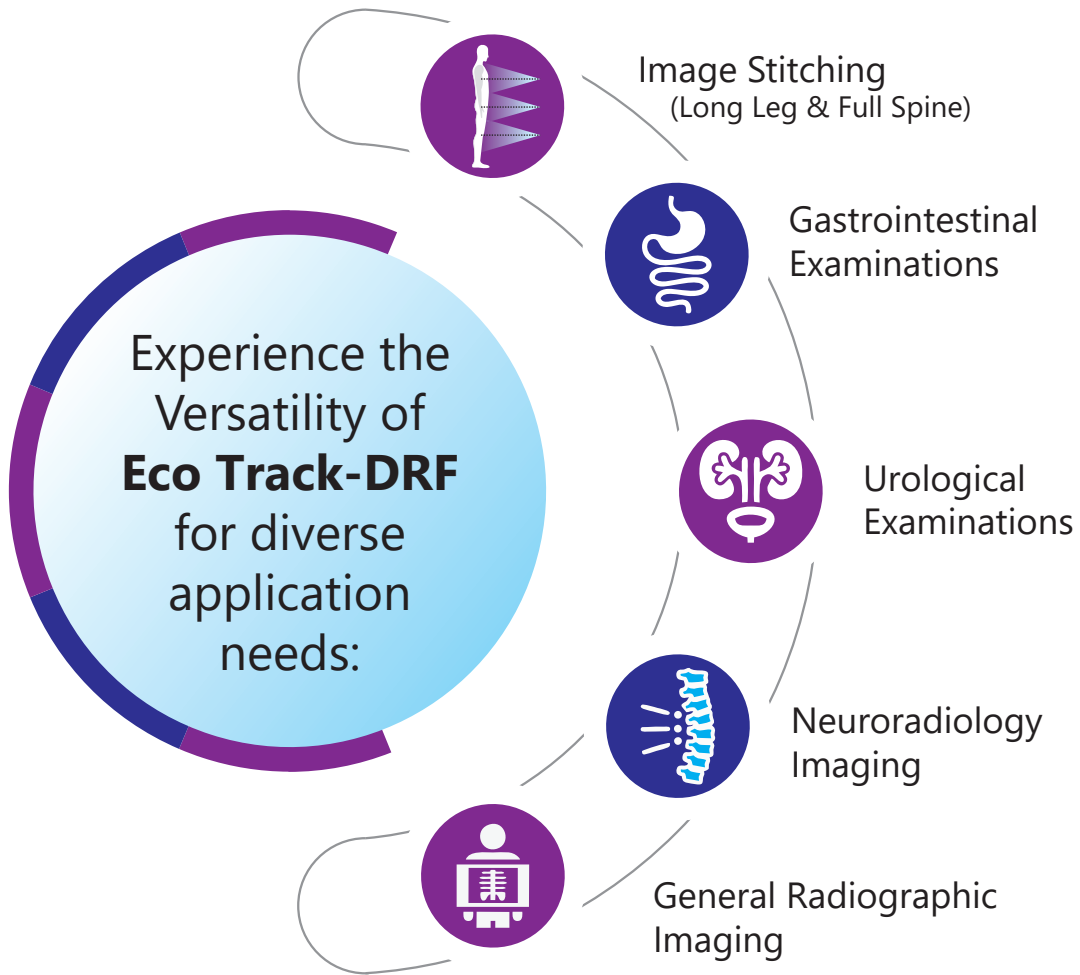
About Eco Track-DRF

Experience the future of medical imaging with our Remote Controlled Digital Radiography and Fluoroscopy System i.e. Eco Track-DRF.

This cutting-edge technology combines the advantages of remote control operation, digital radiography, and fluoroscopy to deliver enhanced efficiency, safety, and image quality.



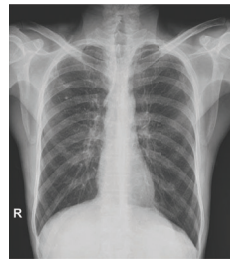
Applications



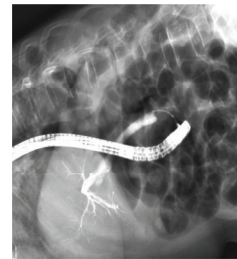
Barium Swallow



Barium Enema



Chest PA



ERCP



HSG



IVP



Retrograde Urethrogram (RGU)



T-Tube Cholangiogram

Salient Features

- ▶ **Automated Tracking System:** The fully digital and motorized auto tracking system ensures precise Positioning & provide ease to the operator & improves the workflow.
- ▶ **Remote Control Capabilities:** Exposure control and movement control are available in the examination room & on Console room for ease of operation.
- ▶ **Dynamic Flat Panel Detector:** 3K x 3K high resolution FPD With real time imaging of fluoroscopy procedures with superior image quality for accurate diagnostic.
- ▶ **High-Frequency Generator:** HF Generator with low patient radiation exposure & gives high-quality images.
- ▶ **Intuitive Interface:** 13.3" capacitive touch screen for Exposure parameters control, SID and angle display & image preview for ease of operation & improves workflow.
- ▶ **Patient Table with Tilt Facility:** Allows Tilt movement (-12° to +90°) for enhanced positioning required during diagnosis procedures.
- ▶ **Versatile Imaging Modes:** Pulsed fluoroscopy, digital spot, and radiography modes for various Imaging options.
- ▶ **Safety Assurance:** Non-contact anti-collision system for patient and system safety.
- ▶ **Seamless Connectivity:** DICOM Connectivity for enhanced workflow integration.
- ▶ **Automatic Exposure Control (AEC):** AEC provided in the table Bucky Ensures consistent image quality by adjusting exposure automatically.

Optional Features

- ▶ **Automated Positioning:** Auto positioning of tube & bucky (Table/VBS) w.r.t. APR view for precise examinations.
- ▶ **Automated Image Stitching:** Automatic image stitching is available in Table & VBS for fast workflow & easy positioning.
- ▶ **Dose Monitoring:** Dose Area Product (DAP) meter for accurate dose recording.
- ▶ **Dual Energy Imaging:** Clear visualization of soft tissues and bone structures separately & together for better diagnostic.
- ▶ **Automatic Exposure Control (AEC) in Vertical Bucky:** For control of exposure parameters automatically.
- ▶ **Reporting Workstation:** Dedicated workstation for regular workflow & review/analysis and documentation.

Image Stitching Software with Optional Hardware Integration:

Efficiently scanning lengthy anatomies such as the spine and legs is made possible through image stitching. Eco Track-DRF presents a stitching feature that captures 2 or 3 exposures to encompass the entire anatomy. With the optional hardware integration, the software seamlessly produces a stitched image promptly.

- ▶ Advanced Image Stitching Software for enhanced imaging capabilities.
- ▶ Motorized vertical bucky stand with auto tracking feature.
- ▶ Seamless auto-positioning function for precise and efficient imaging setup.
- ▶ Auto positioning feature w.r.t. APR view for precise positioning & efficient workflow

Floor Mounted Motorized Vertical Bucky Stand with inbuilt Static FPD.



- ▶ Autotracking & Auto synchronization for positioning of tube w.r.t Bucky.
- ▶ Seamless coverage from head to toe during fluoroscopy procedures.
- ▶ Patient-friendly footrest with a robust load capacity of up to 250 kg.
- ▶ Motorized tube up-down movements for efficient and precise adjustments.

Fixed Allpose Patient Table with Dynamic FPD.



Technical Specifications

Series	Eco Track-DRF			
Models	Mars 50	Mars 50+	Mars 65	Mars 80
GENERATOR				
Power Rating	50 KW	50 KW	65 KW	80 KW
Generator Frequency	40 KHz			
Inverter Type	Dual			
RADIOGRAPHY PARAMETERS				
kV Range	40 kVp to 125 kVp	40 kVp to 150 kVp		
mA Output	Max. up to 630 mA	Max. up to 800 mA	Max. up to 1000 mA	
mAS Range	Up-to 350 mAs			
FLUOROSCOPY PARAMETERS				
kV Range	40 kVp to 120 kVp			
mA Output	<ul style="list-style-type: none"> Fluoro Mode: up to 10 mA Cine Mode: up to 20 mA 	<ul style="list-style-type: none"> Fluoro Mode: up to 20 mA Cine Mode: up to 40 mA 	<ul style="list-style-type: none"> Fluoro Mode: up to 50 mA Cine Mode: up to 70 mA 	
Exposure Time	300 Seconds with audio alarm system			
POWER SUPPLY REQUIREMENT	<ul style="list-style-type: none"> 400 Volt, 3 phase supply of 50/60 Hz Frequency with line resistance less than 0.2 ohms. Permissible Line regulation of $\pm 10\%$ with Double Independent Earthing. 			

These are broader specifications with highest certifications. The final product will be dispatched as per agreed terms in quotation.



ASSURE Protocols : All X-Ray based equipments involve some potential risk of radiation exposure. We, at Allengers understand your concerns. Allengers is fully committed towards radiation safety and care of its customers.

Allengers has introduced ASSURE Protocols, which is a step in the direction of delivering best possible image quality at lowest possible dose. Allengers products with ASSURE Protocols are carefully crafted to protect users and patients from unwanted leakages in the X-Ray equipment.

ASSURE version range mentioned is based upon lowest and highest configurations of safety standard protocols and is configuration dependant, which may vary for desired combinations.

DISTRIBUTED BY



FOR ANY ENQUIRIES CONTACT US

+44 20 3642 1175

info@euronoxxmedical.com

www.euronoxxmedical.com

35 Berkeley Square, Mayfair, London, W1J 5BF