

Allengers

Passion for excellence

DISTRIBUTED BY

EURONOXTM
EURONOX MEDICAL GROUP



High Frequency Fixed X-Ray Systems



Technology for
..... Superb Images

Quality, System and
Safety Certifications



Mars
15 - 80

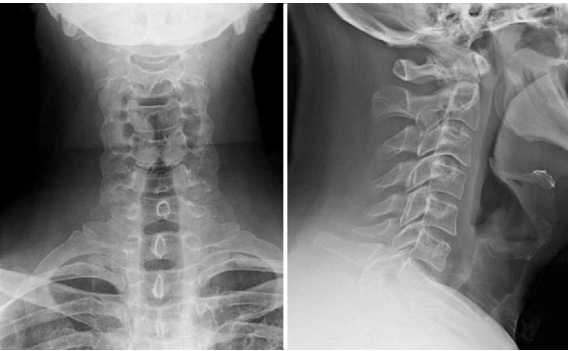
ABOUT US

Welcome to the world of Allengers, a world that understands your needs, a world that actually cares. Allengers, an Indian MNC, winner of National Award - 'Quality Products' from The Prime Minister of India, is a leading manufacturer covering a wide spectrum of medical diagnostic equipments.

Allengers 35 years of expertise in imaging solutions, coupled with innovative research, has resulted in providing cost effective, result oriented radiography and fluoroscopy solutions to the medical world.

MARS 15 - 80

Allengers MARS range (15 KW - 80 KW) of High Frequency X-Ray machines are specialized models for general radiography and fluoroscopic applications.

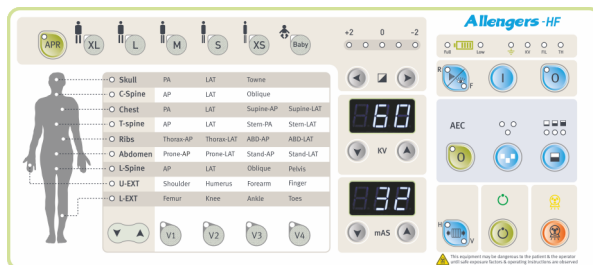


THE HF ADVANTAGE

- ✓ Lower Radiation Doses
- ✓ Diagnostic Precision
- ✓ High Quality Images
- ✓ Less Skin Dose

CONTROL PANELS

These panels can be supplied in floor or wall mount options and has a spill proof design.



Compact, soft touch control panel



LCD -TFT touch control panel (optional)

STANDARD FEATURES

- Machine ON / OFF switch.
- Digital display of parameters.
- Parameter increase / decrease switches.
- Ready and X-Ray ON switch with indicators.
- Bucky selection switch.
- A dual action hand switch with retractable cord for radiation protection of operator.

SPECIAL FEATURES

- Pre-programmed parameters of human anatomy which helps the user to select exposure parameters based on body part, examination view and size of the patient are available.
- Inbuilt micro controller based electronic overload protection device.
- Self diagnostic program which ensures system check and error display thereby expediting fault detection.
- Automatic Exposure Control (AEC) that enables auto selection of radiographic factors, saves time, eliminates retakes, increases diagnostic capability and lowers radiation dose (optional).
- LCD -TFT touch control panel - as per user intended applications (optional).

TUBE STAND WITH FLOOR MOUNTED CEILING FREE STAND

Ceiling free tube stand is a convenient and light weight Floor Mounted Tube Stand which can be accommodated in lesser space.

All movements :

- Column movements.
- Telescopic Horizontal.
- Vertical up / down movements.
- $\pm 90^\circ$ column rotation for lateral X-Ray on table (Model Specific).
- All movements controlled from soft touch keys on tube console panel for electromagnetic brakes.



System configuration shown above

Floor mounted X-Ray system with Floatex (4 way movements table) with table top and X-Ray bucky controlled by lock brakes and Vertical Bucky Stand (manual/motorized).

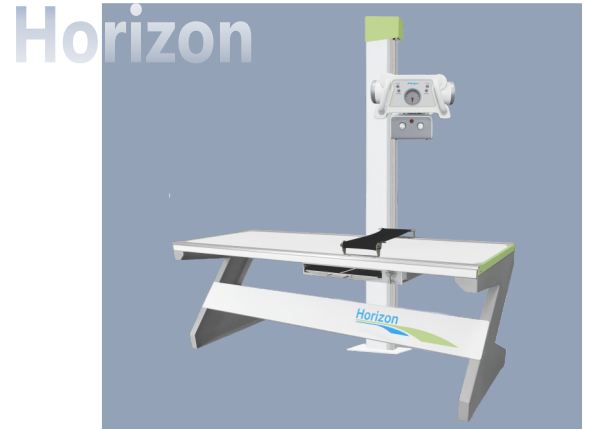


Experience the Versatility of Allengers X-Ray Systems

These units come with various combinations of tube stands and examination tables for various user profiles and application needs of specialists.

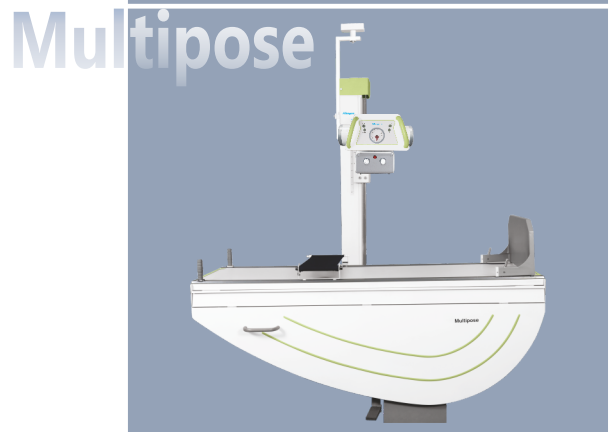
X-Ray system with horizontal table and floor to ceiling tube stand (option with ceiling free tube stand also available).

This examination table is a fixed bucky table which is compatible with ceiling free and floor to ceiling stands for all general radiographic applications.



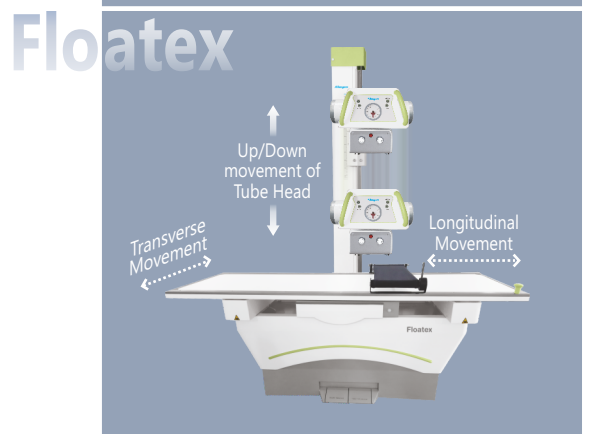
X-Ray system with Multipose table and floor to ceiling tube stand.

This examination table is a manual multi-position hand-tilt table which allows all general radiographic applications where tilt of the table is required for specific radiographic procedures.



X-Ray system with Floatex table and ceiling free tube stand (option with floor to ceiling tube stand also available).

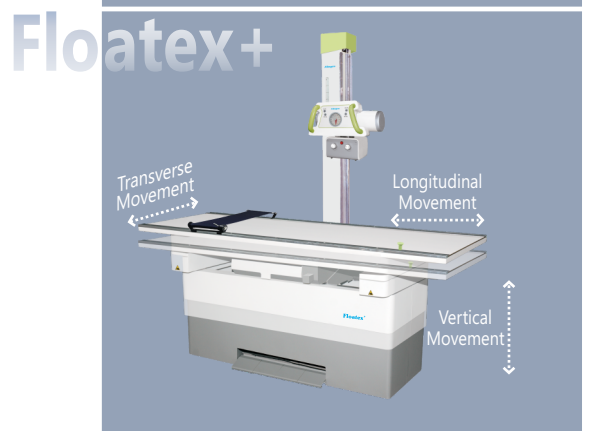
This table top has 4 way effortless movements (longitudinal and transverse travel) for ensuring optimal patient positioning. Available with larger table top for extended movements (Floatex XL).



X-Ray system with Floatex+ table and ceiling free tube stand.

The table top has 6 way movements (longitudinal, transverse and vertical travel) thereby ensuring optimal patient positioning, specially for trauma and old/critical patients.

The Ceiling Free (CF) tube stand is most suitable for low ceiling rooms and also eliminates costly structural modifications. Available with larger table top for extended movements (Floatex+ XL).



X-RAY TUBE HEAD with electromagnetic locks



±90° or ±180°
as per the tube stand

COLLIMATOR (manually operated light beam diaphragm)



X-Ray system with AllposeRAD table and floor to ceiling tube stand.

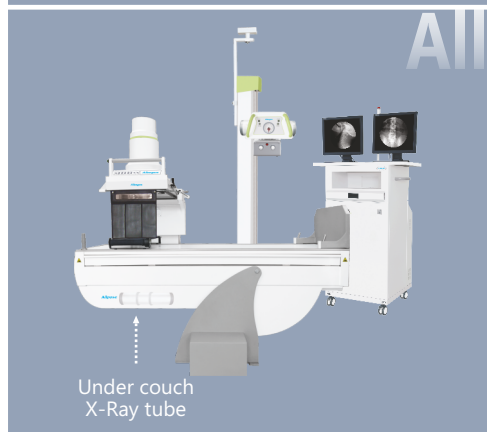
This examination table is a motorized multi-position table for all radiographic procedures.



Allpose

X-Ray and fluoroscopy system with Allpose table, SFD and floor to ceiling tube stand.

This examination table is an all position motorized table in which Spot Film Device (SFD) is mounted for specific radiographic / fluoroscopic procedures.



Allpose

X-Ray and fluoroscopy system with Allpose table, SFD, I.I. TV system and floor to ceiling tube stand.

This system makes use of radiographic and fluoroscopic procedures in a single system. The system consists of a motorized table, tube mounted on FC stand, double X-Ray tube (optional), Image intensifier with SFD mounted on table along with the imaging memory on a mobile trolley.

Under couch
X-Ray tube

MAJOR TECHNICAL SPECIFICATIONS*

Models	Mars 15	Mars 30	Mars 40	Mars 50	Mars 50+	Mars 65	Mars 80
X-Ray Generator	High Frequency Technology						
Output	15 KW	30 KW	40 KW	50 KW	50 KW	65 KW	80 KW
Max mA	250	400	500	630	800	800	1000
KVP Range	40 - 125				40 - 150		
Application	RAD		RAD / RAD + FLUORO				
X-Ray Tube	Rotating anode dual focus x-ray tube						
Tube Stands	Option of following stands available: <ul style="list-style-type: none"> ■ Floor to Ceiling (FC) ■ Ceiling Free Counter Balanced (CF-CB) ■ Ceiling Free Spring Balanced (CF-SB) ■ Ceiling Suspended Manual (CS) ■ Ceiling Suspended Motorized (CSM) ■ Ceiling Suspended Autotracking (CSA) 						
Examination Tables	Option of following tables available: <ul style="list-style-type: none"> ■ Horizon (horizontal fixed bucky table) ■ Multipose (manual hand-tilt multiposition bucky table) ■ Allpose (all position fixed / sliding table top motorized bucky table with SFD) ■ AllposeRAD (motorized tilt with fixed / sliding table top bucky table) ■ Floatex (Horizontal table with 4 way movement table top) ■ Floatex XL (Horizontal table having larger table top with extended 4 way movements) ■ Floatex+ (Horizontal table with 6 way table top movements) ■ Floatex+ XL (Horizontal table with 6 way table top movements having larger table top for extended movements) 						
Power Requirement	3 phase 400 VAC, 50/60 Hz. with line regulation of $\pm 10\%$						
	Max. 18.75KVA	Max. 37.5KVA	Max. 50KVA	Max. 62.5KVA		Max. 80KVA	Max. 100KVA
	For capacitor bank systems : Single phase 230 VAC $\pm 10\%$, Max. 2.5 KVA for 15, 30, 40 KW RAD models						
Options	■ Vertical bucky stand (motorized/manual) ■ Servo stabilizer ■ LCD-TFT touch control panel						

MARS 40-80 (IMAGING CHAIN FOR FLUOROSCOPY APPLICATIONS)

Parameters	Pulse fluoroscopy with 1K x 1K resolution
Image Intensifier	9"
Camera	1K x 1K High resolution camera with digital output
Imaging Memory	Synergy LDHD RF Software
Monitor	Standard : 1 no. 19" monochrome medical display monitor Optional : 2 nos. 17" colored monitors (other type and size can be user selectable)

* These are broader specifications with highest certifications. The final product will be dispatched as per agreed terms in quotation.



ASSURE Protocols : All X-Ray based equipments involve some potential risk of radiation exposure. We, at Allengers understand your concerns. Allengers is fully committed towards radiation safety and care of its customers.

Allengers has introduced ASSURE Protocols, which is a step in the direction of delivering best possible image quality at lowest possible dose. Allengers products with ASSURE Protocols are carefully crafted to protect users and patients from unwanted leakages in the X-Ray equipment.

ASSURE version range mentioned is based upon lowest and highest configurations of safety standard protocols and is configuration dependant, which may vary for desired combinations.

FOR ANY ENQUIRIES CONTACT US

+44 20 3642 1175

info@euronoxmedical.com

www.euronoxmedical.com

5 Berkeley Square, Mayfair, London, W1J 5BF

DISTRIBUTED BY

