

Rocvue T7

Unveiling Super-Resolution

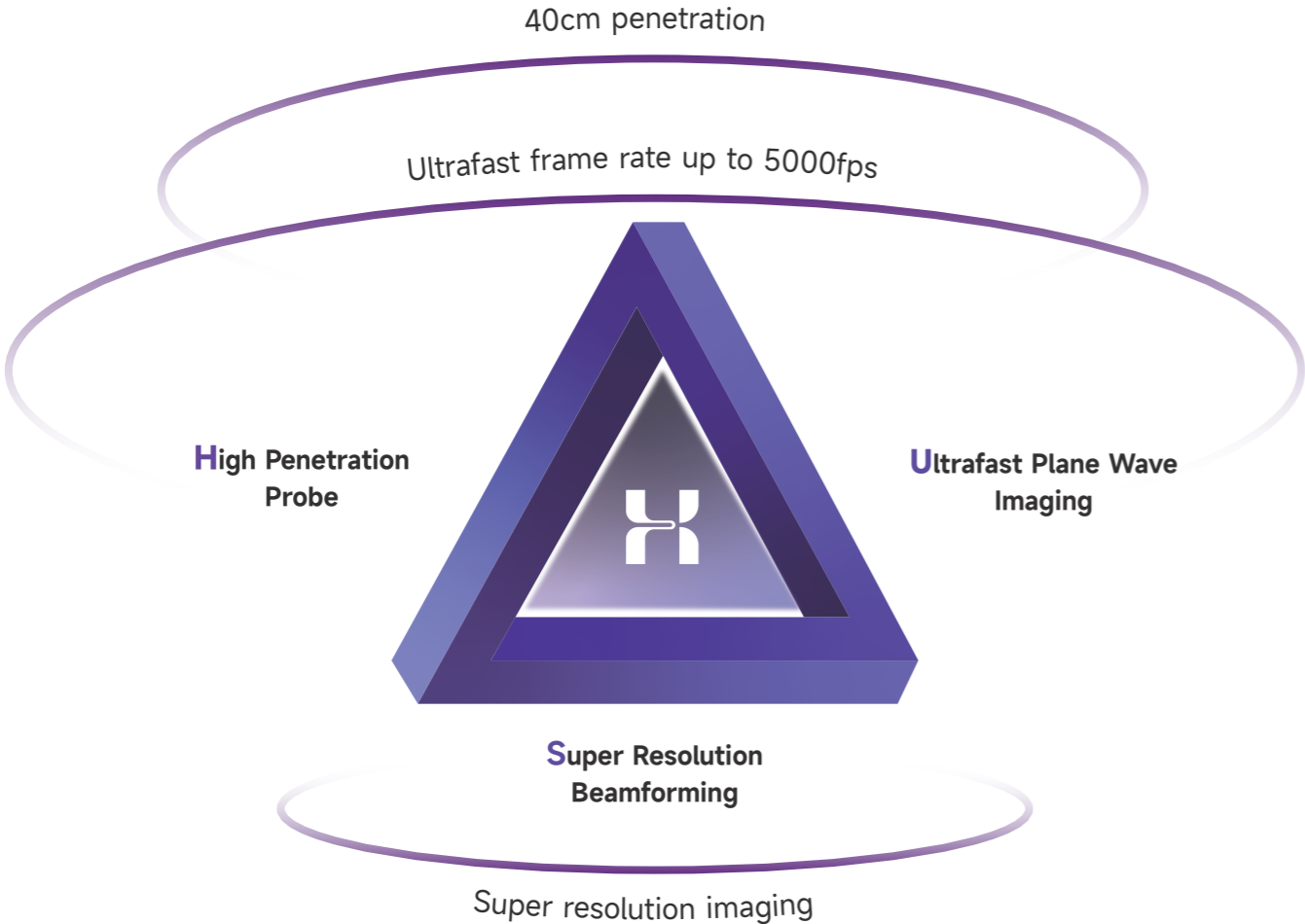


Krinwave
Shenzhen Krinwave Technology Co.,Ltd.

7F, Lenovo Building, No. 16 Gaoxin South First Road,
Nanshan District Science Park, Shenzhen
+86 0755-8652 2864
kwmarketing@krinwave.com
www.krinwave.com

©Krinwave and all content in this brochure, including but not limited to text, images, graphics, and layout design, are protected by copyright. Without explicit written permission from Krinwave, no unit or individual may reproduce, disseminate or use it for any other commercial purposes in any form.
This material is only for training or learning purposes.

Principle Breakthrough

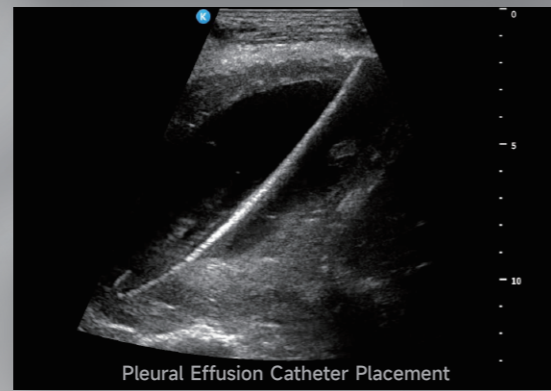
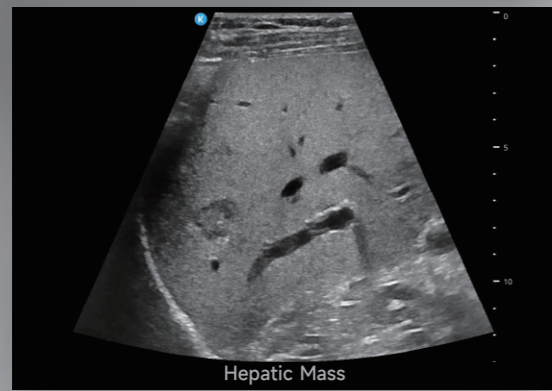
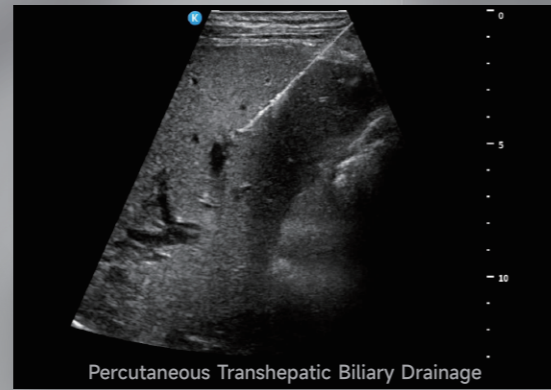
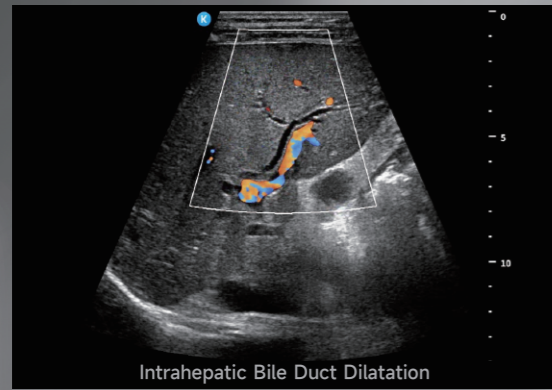


H
 High Penetration Probe
 Ultrafast Plane Wave Imaging
 Super Resolution Beamforming

Based on the platform of kOS, Krinwave Ultrasound Operating System, the unique technology of HUS that is comprised of High Penetration Probe, Ultrafast Plane Wave Imaging and Super Resolution Beamforming, has been created and realized on Krinwave Ultrasound System for the first time in industry. The Rocvue T7 has achieved a wonderful combination of super resolution and fast imaging with high penetration for the deep tissues.



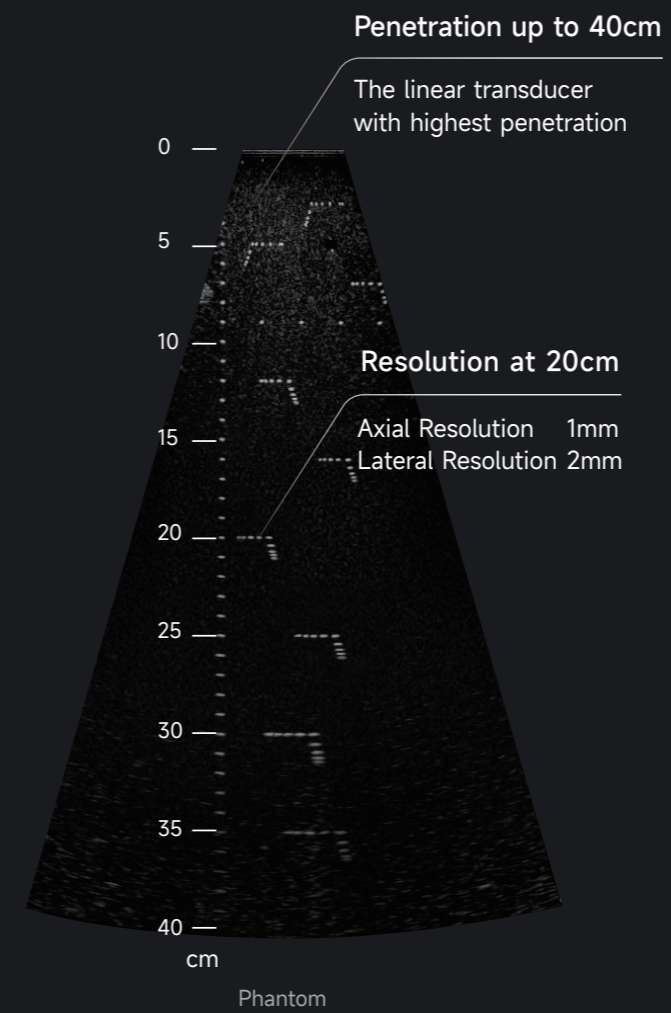
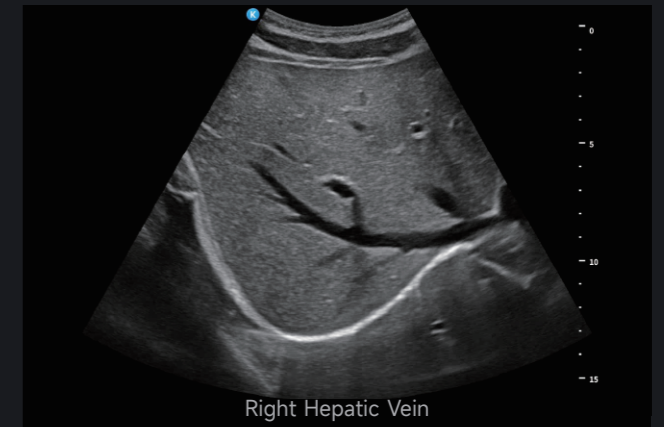
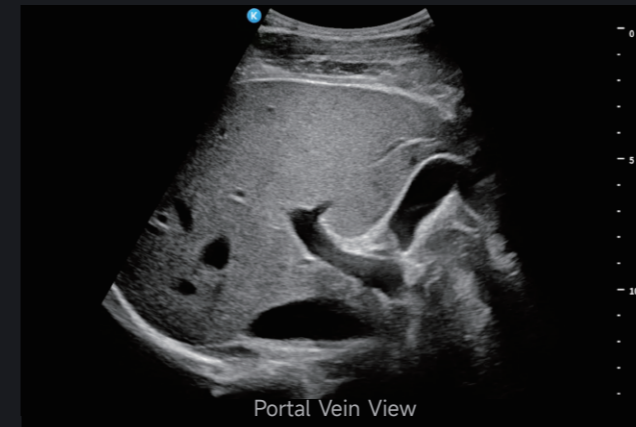
Accurate Procedure



The precise lesion with detailed imaging at the any depth of whole field, clear needle tip visualization as well as puncture track without blind region during interventional procedure, has allowed treatment easy and safe.



Unprecedented Penetration

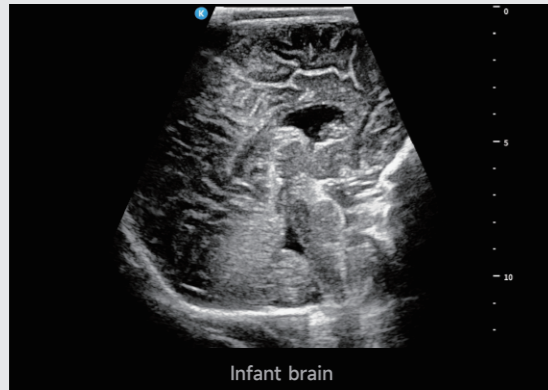


Abdomen transducers with highest penetration is able to simultaneously display super resolution at deep tissues, to realize precise diagnosis for obese patients.



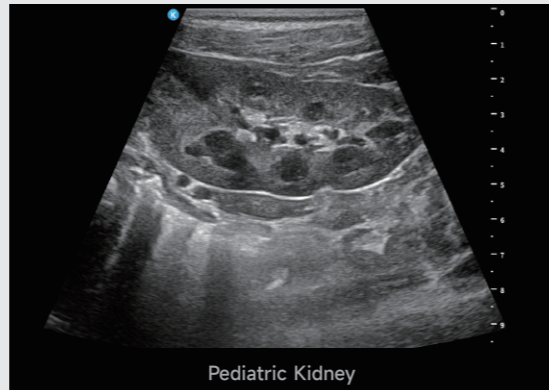
Distinctive Pediatrics

5 months old



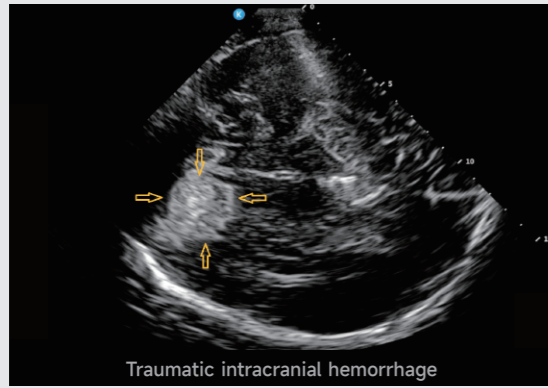
Infant brain

6 years old



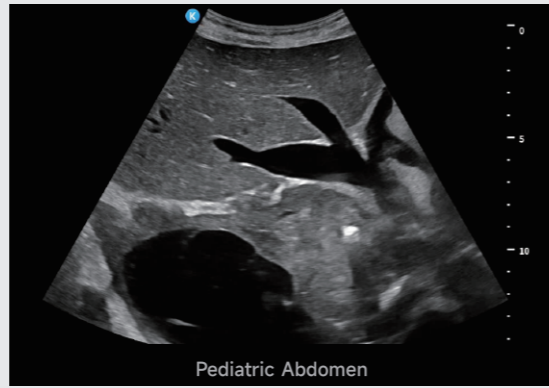
Pediatric Kidney

8 years old



Traumatic intracranial hemorrhage

12 years old

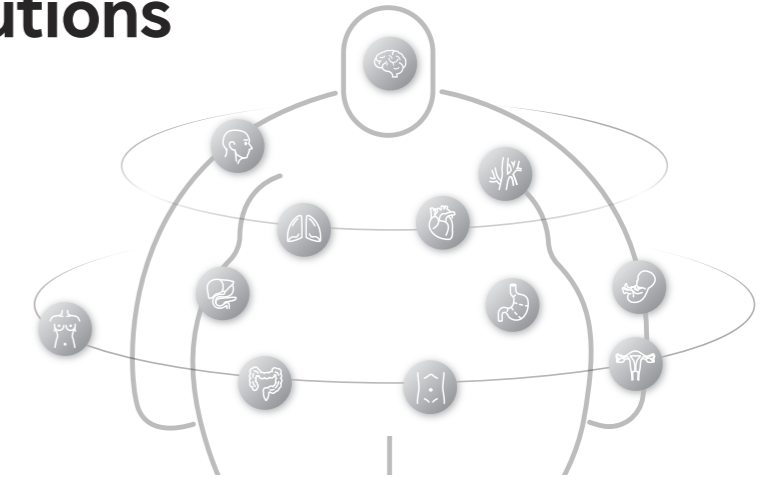


Pediatric Abdomen

Due to covering the wide range ages of children, Rocvue T7 is able to applied from new-born baby to teenager, particularly focusing on abdominal and lung scenarios.

Comprehensive Solutions

Based on HUS technology, Rocvue T7 provides customers with comprehensive solutions, widely applied in abdominal, gastrointestinal, superficial and cardiovascular fields.



High Penetration Transducer

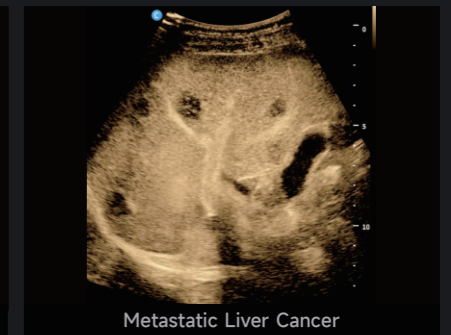
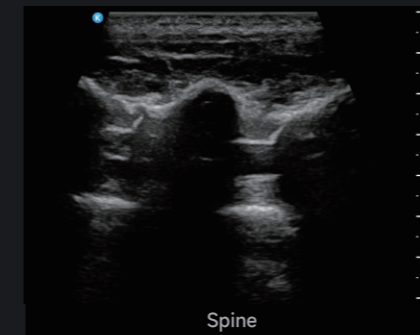
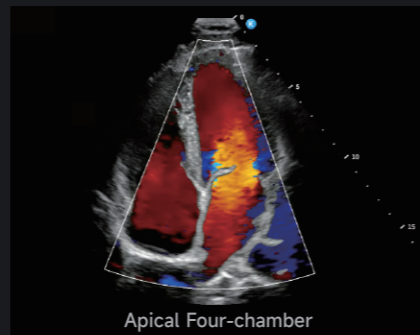
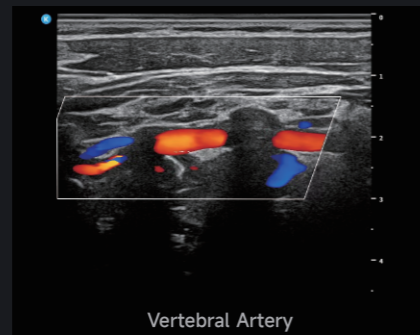
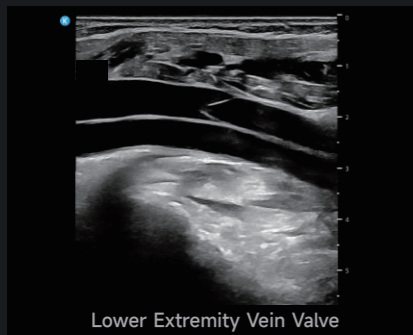
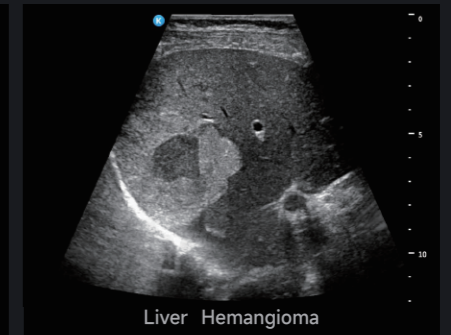
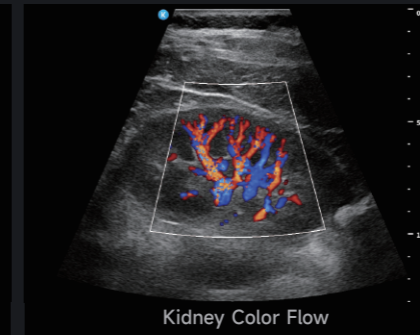
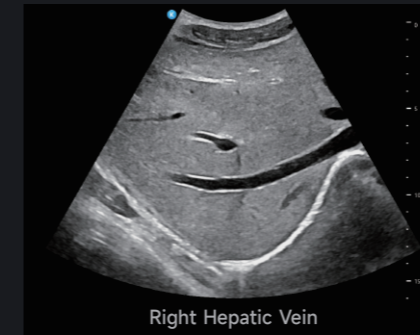
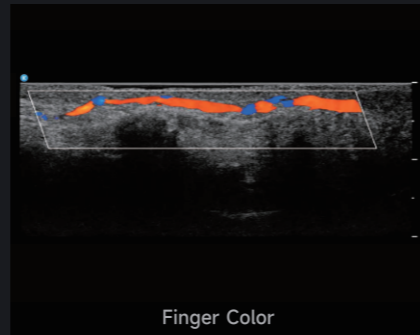
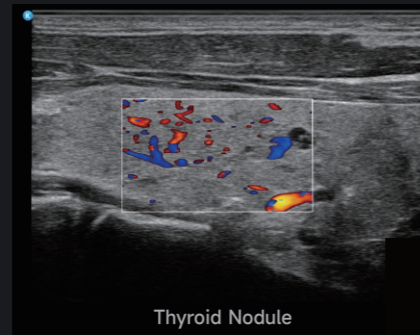
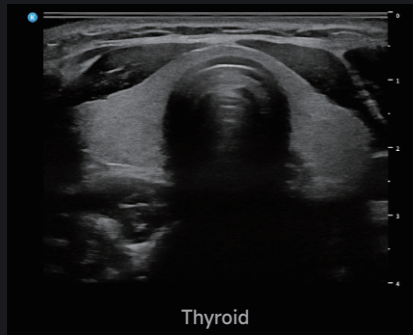
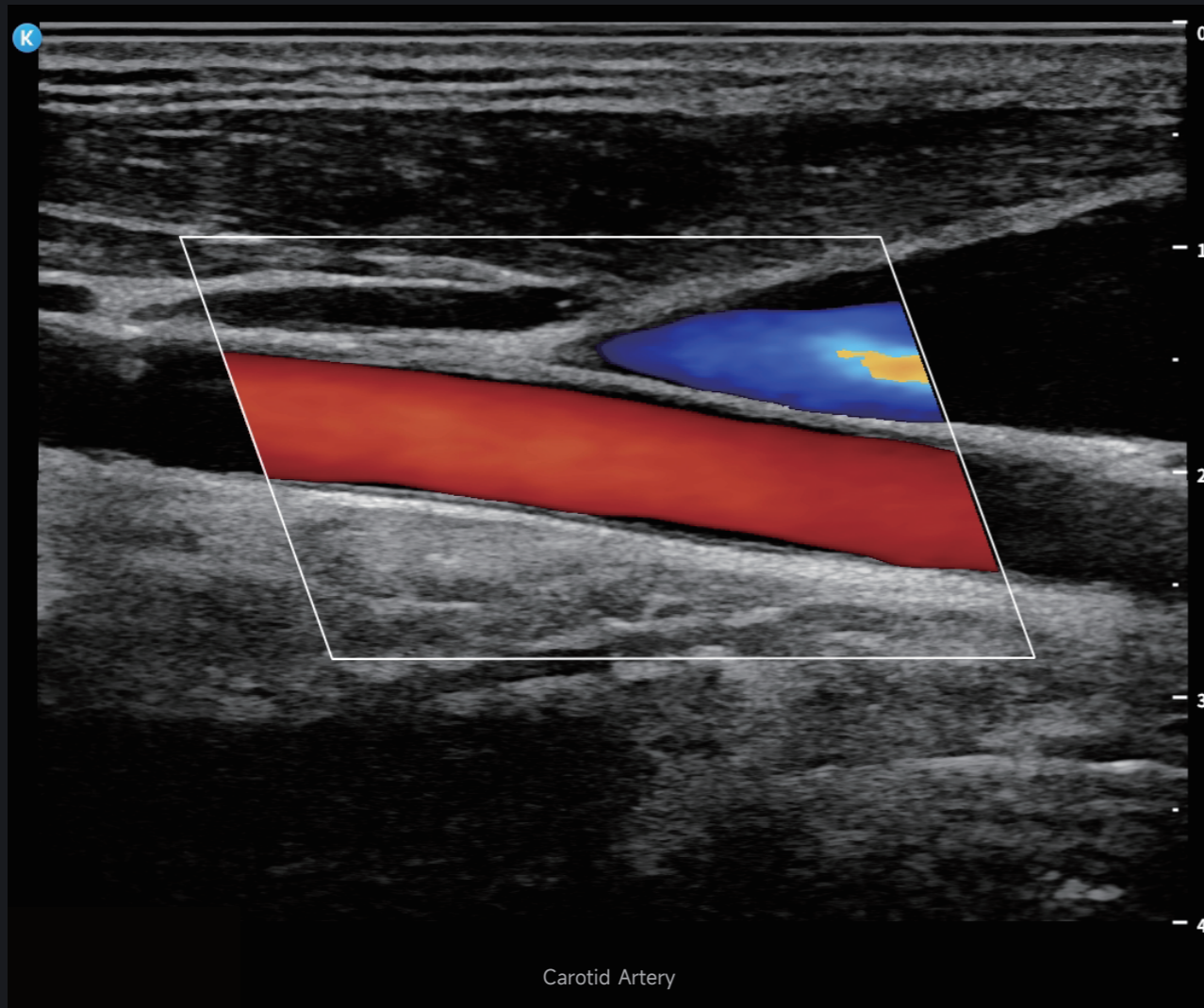
Core Technologies



Transducers Family



Image Gallery



User-friendly Ergonomics Design



Slim footprint of 500mm width



1m height for transportation



Entire cable management

